

*Intrenchment Creek Water Reclamation
Center:
Ground Penetrating Radar (GPR) Evaluation.*

Project:	GPR Evaluation to Map Subsurface Utilities
Client:	Black & Veatch
Location:	Intrenchment Creek Water Reclamation Center (ICWRC), Atlanta
Completion:	Completed

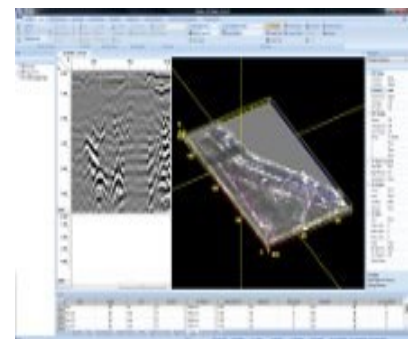


Objective: To map subsurface utilities in order to inform the development of a plan to decommission and demolish existing ICWRC plant facilities.



The existing facilities at ICWRC are in poor condition and maintenance on many of the process units had been deferred. A significant capital investment would have been required to upgrade the facilities to achieve reliably consistent regulatory compliance. Studies undertaken by the city of Atlanta determined that the technically and economically feasible wastewater management option for ICWRC would be to decommission all ICWRC treatment operations and convey wastewater to the South River Water Reclamation Center for complete treatment.

Since the decommissioning of the facility will require that below ground structures be demolished down to 5 feet below grade, MME was engaged by Black & Veatch in 2013 to map the buried infrastructure such as gravity pipes, pressure pipes, force mains, electrical duct banks, pipe tunnels, and all other yard pipes greater than 2-inches diameter. In addition, MME was required to depict equipment bases and structural foundations, building walls, building foundations, pilings, slabs, basements, and buried tanks.



The data generated by the GPR scans was interpreted and correlated with data from other sources to resolve conflicting information, then translated using conversion software into an Autodesk Civil 3D format. This will facilitate the preparation of drawings of the buried infrastructure suitable for design purposes and will be critical to the determination of the scope of works associated with the decommissioning and demolition of the facilities.