
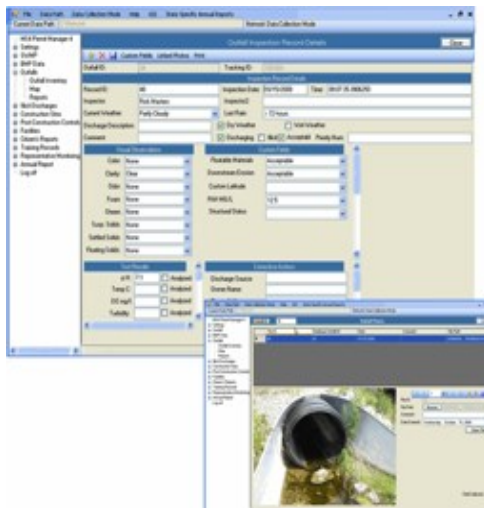


Georgia DOT:
MS4 Permit Compliance

Project:	Georgia DOT MS4 Permit Compliance	
Client:	Arcadis	
Location:	Locations Throughout the State of Georgia	
Completion	Ongoing	

Objective: To provide consultant services for Municipal Separate Stormwater Sewer System permit (MS4) compliance.

Since 2013, MME has been working as a teaming partner with Arcadis to assist Georgia DOT in complying with its MS4 permit requirements. MME is specifically participating in control measures associated with illicit discharge and elimination, inclusive of:



- Mapping and inventory of all MS4 outfalls and receiving waters, drainage structures, detention facilities, water quality facilities, and impaired streams within one mile of GDOT outfalls
- Collecting and reducing mapping into a MS4 Geographical Information System (GIS) database compatible with GDOT standards
- Complying with any special provisions regarding the MS4 permit and as directed by GDOT.
- Coordinating with local MS4 (city or county government) and GDOT Subsurface Utility Engineer to determine whether mapping and inventory data exists and use this data for the GDOT's MS4 database.

- Providing traffic control in compliance with the Manual of Uniform Traffic Control Devices (MUTCD).
- Resolving complaints as reported through GDOT's remedy software, MS4 website, and by other means on an as needed basis.
- Conducting inspections of all drainage structures detention facilities, water quality facilities, including outfalls according to GDOT's MS4 permit and GDOT's direction.

